

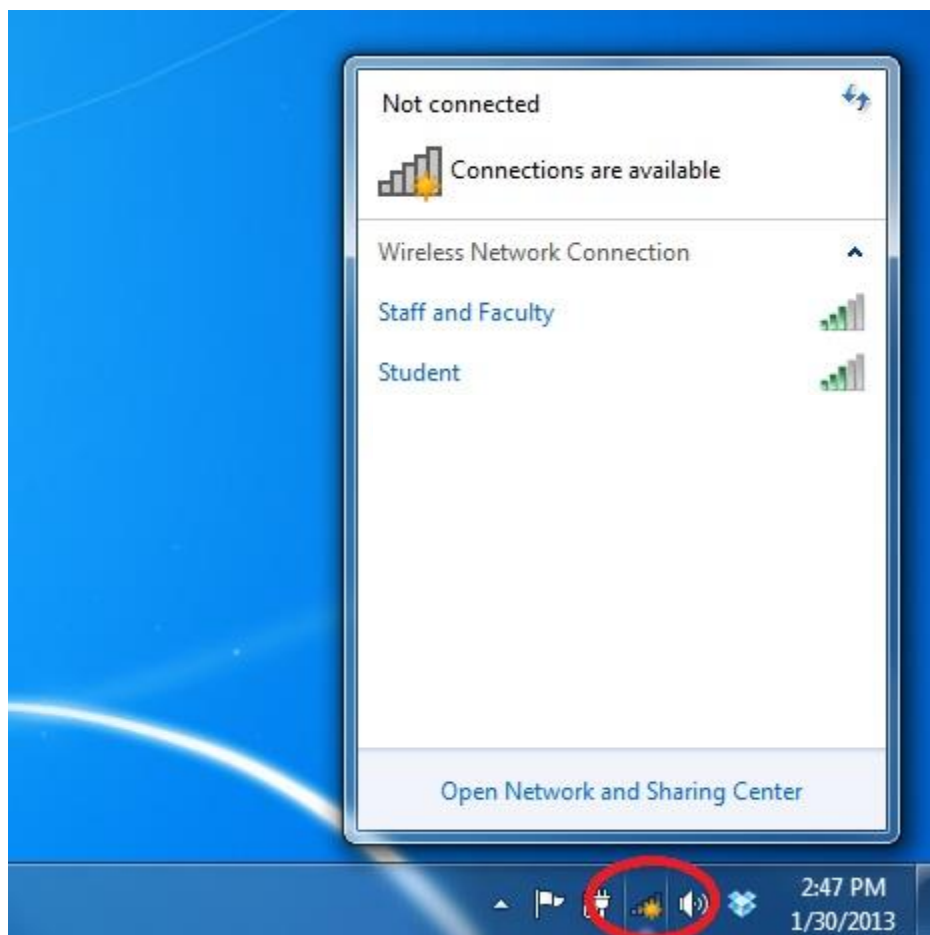


# WIRELESS ACCESS GUIDE FOR STUDENTS USING WINDOWS VISTA & 7

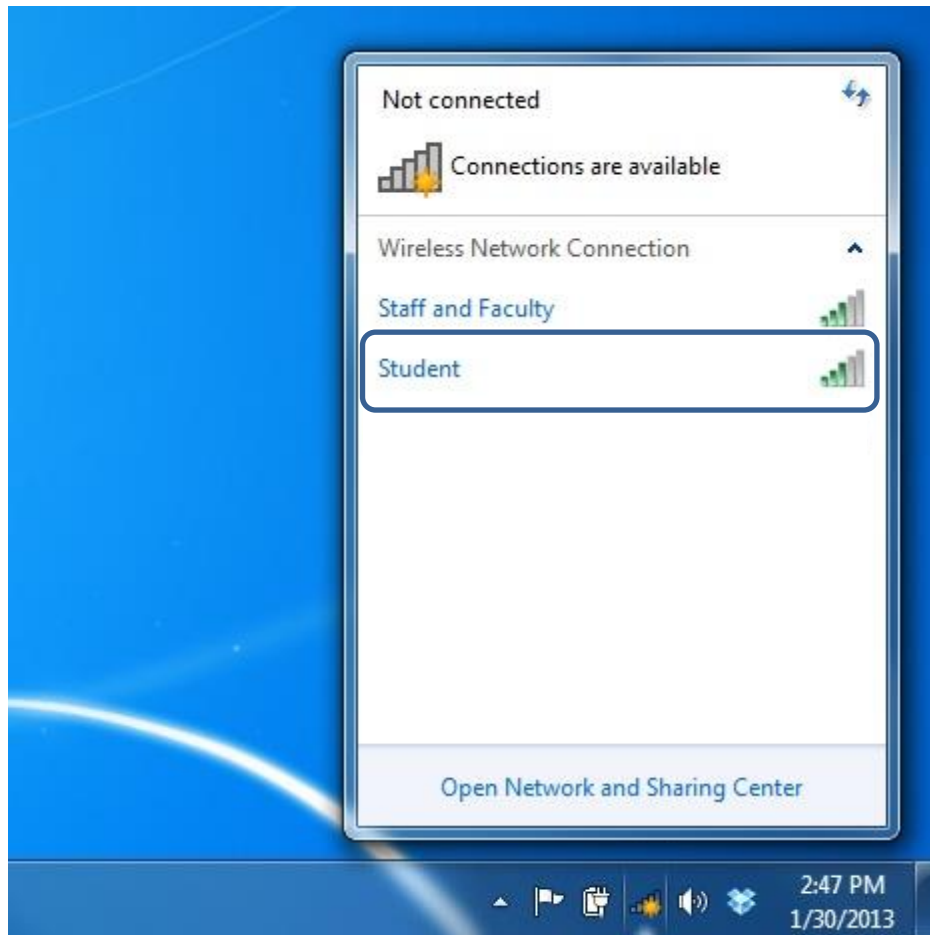
VER. 2 UPDATE 07-6-2016

**\*NOTE: IF THE COMPUTER YOU ARE USING HAS A DIFFERENT CONFIGURATION THAN SEEN BELOW,  
PLEASE CONTACT THE HELP DESK @ 570-702-8854 FOR ASSISTANCE.**

**Step 1:** In order to connect to the Johnson College wireless network, you must first click on the “Wireless Network Connection” button located on the task bar. (See circled item below)

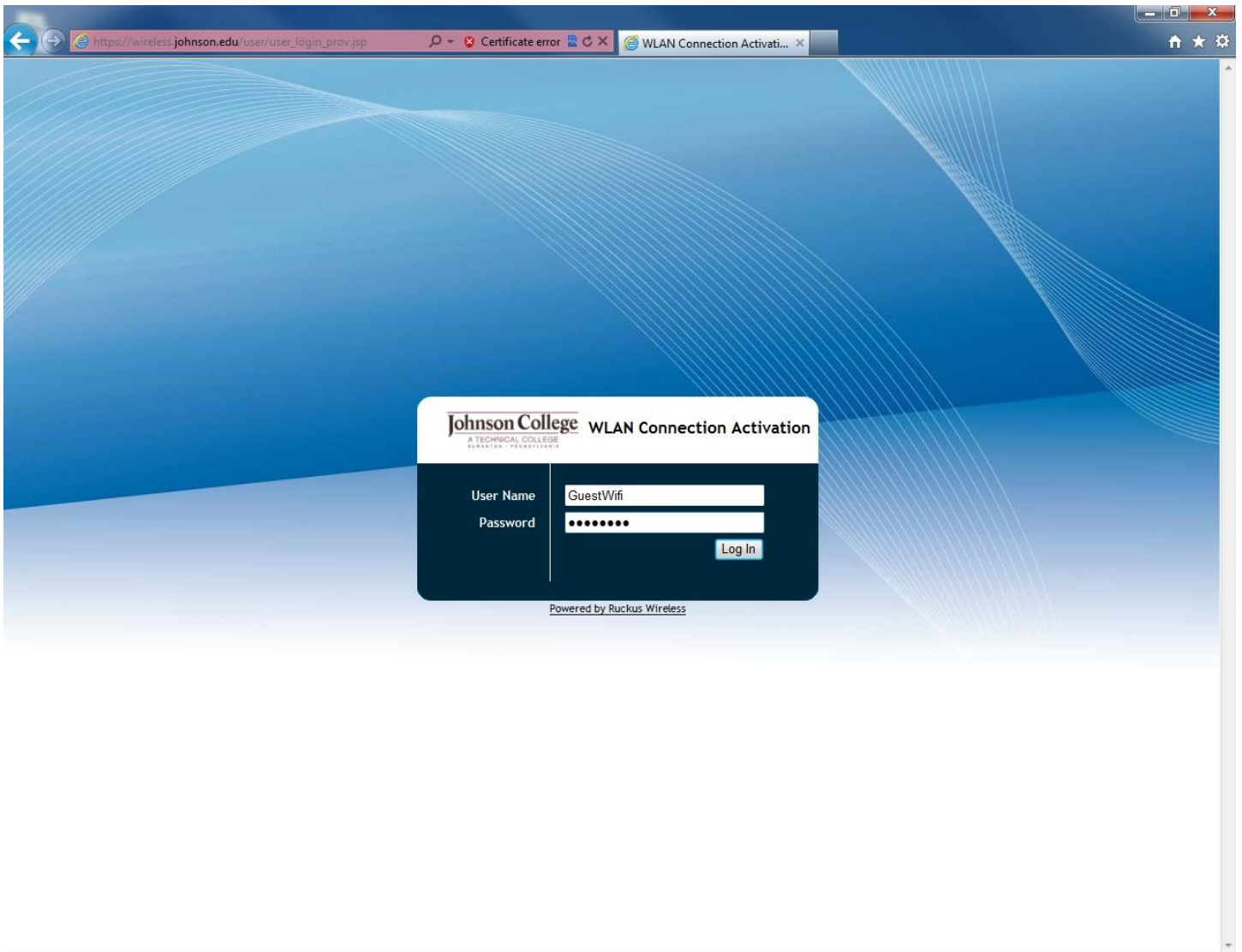


**Step 2:** View available wireless networks. You should see something similar to the screen below. Connect to the “**Student**” wireless connection.



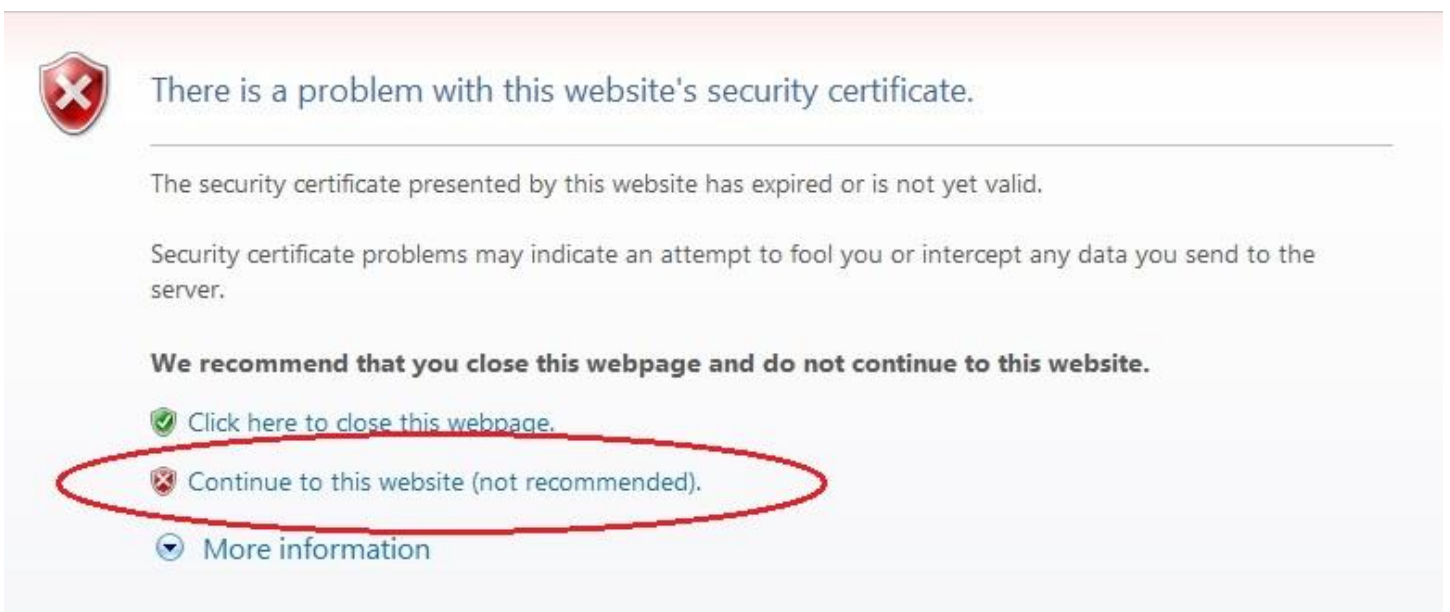
**Step 3:** Once you are connected, open Internet Explorer and attempt to go to any website. You will then be automatically forwarded to the Johnson College wireless portal as seen below.

**NOTE:** If you are not directed to either of the screens below, *type “[wireless.johnson.edu](http://wireless.johnson.edu)” in your address bar and press enter.* You should then be redirected to the page.



**NOTE:**

*If you see the screen below instead of the screen above: click “Continue to this website” to be redirected.*



**Step 4:** Once you're at the portal, you will then enter your Johnson College user account username and password and then press the "Log In" button. After pressing the "Log In" button, you will be automatically connected to the "Student" wireless network.

**NOTE:** *If you still can't connect to the internet, it may not have automatically connected you to the proper network. To make sure, repeat steps 1 and 2, but this time connect to "Student".*

**\*\*NOTICE:** YOUR STUDENT WIRELESS CONNECTION WILL REMAIN VALID FOR **30** DAYS ONCE A CONNECTION IS ESTABLISHED. AFTER **30** DAYS, YOUR CONNECTION WILL EXPIRE AND WILL NEED TO BE RENEWED FOLLOWING THE PROCEDURE IN THIS GUIDE.

## QUESTIONS & SUPPORT

In the case of a technical problem or support question you may contact the Help Desk via e-mail at [helpdesk@johnson.edu](mailto:helpdesk@johnson.edu) or call (570) 702-8854.