

ELECTRICAL CONSTRUCTION TECHNOLOGY

CAREER PATHS

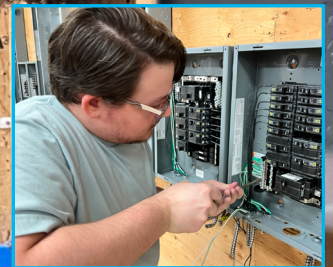
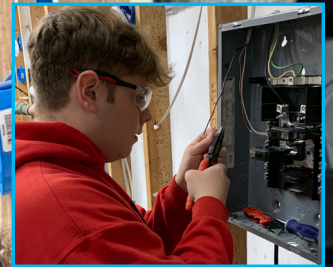
CHIEF ELECTRICIAN
ELECTRICAL MAINTENANCE WORKER
MASTER ELECTRICIAN
LICENSED ELECTRICIAN
HOUSE WIRER
SOLAR PHOTOVOLTAIC ELECTRICIAN

SALARY

\$60,240*
MEDIAN ANNUAL INCOME

JOB GROWTH

2022-2032: 6%*



SCAN FOR YOUR FUTURE



*2023 Bureau of Labor Statistics
Johnson College does not discriminate with regard to race, color, national origin, sex, or disability.



ELECTRICAL CONSTRUCTION TECHNOLOGY



PROGRAM OBJECTIVE

The Electrical Construction Technology program prepares students as entry-level technicians for the operation, inspection, installation, calibration, repair, maintenance and safety of residential and commercial electrical equipment.

READY. SET. WORK.

- Goal 1:** The graduate will be prepared as an entry-level technician in the electrical construction and maintenance industry
- Goal 2:** Graduates will demonstrate safe electrical practices and understand how important they are in the electrical environment.
- Goal 3:** Graduates will acquire a foundation of education and skills for career advancement and lifelong learning.

Applicants are encouraged to arrange a campus visit and a personal information session with a Recruitment Advisor. Appointments may also be made to meet with appropriate faculty and current students.

CAREER OPPORTUNITIES

Graduates work as residential and commercial electricians, industrial engineering technicians in production environments. Graduates will also be prepared as quality assurance technicians, linemen or technicians for the power industry. Typical employers in the electrical field are telecommunications companies, utilities, Union and Non-union electrical companies and manufacturing companies.

PROGRAM COURSES

CREDITS

SEMESTER 1

Introduction to Pipefitting	2
Introduction to Electricity for the Trades	1
Introduction to Electricity for the Trades Lab	2
Microcomputer I	3
English Composition I	3
College Algebra I and Trigonometry	3
First-Year Experience	1

SEMESTER 2

Construction Elective	3
Fundamentals of Electricity	2
Fundamentals of Electricity Lab	2
Residential Wiring	2
Residential Wiring Lab	4
Introduction to Business or Customer Service and Our World	3
Science Elective	3

SEMESTER 3

Programmable Logic Controllers I	2
Programmable Logic Controllers I Lab	2
Contract Drawings	3
Communication Elective	3
Electrical Grounding, Bonding, & Service Installation	2
Electrical Grounding, Bonding, & Service Installation Lab	1
National Electric Code Interpretation	1
Commercial Wiring	2
Commercial Wiring Lab	1

SEMESTER 4

Motors and Controls	2
Motors and Controls Lab	4
Industrial Maintenance and Mechanics	2
Industrial Maintenance and Mechanics Lab	1
Applied Practice and Special Topics Lab or Internship	4

MINIMUM CREDITS TO GRADUATE 64

This semester layout is based off of a fall start. Students who start in the spring will be required to attend an additional semester to complete their degree.

There may be special admission requirements for this program. Please speak with a Recruitment Advisor by calling **570-702-8856** or visit our website **johnson.edu** to review our requirements.