

# HEAVY EQUIPMENT TECHNOLOGY

## CAREER PATHS

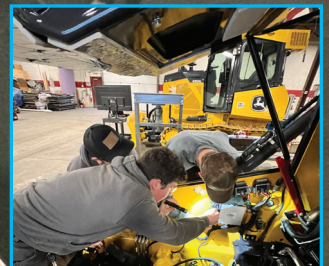
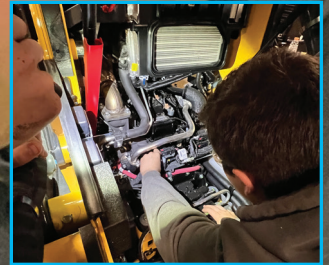
MOBILE HEAVY EQUIPMENT TECHNICIAN  
CONSTRUCTION EQUIPMENT TECHNICIAN  
FIELD SERVICE TECHNICIAN  
DEALER SERVICE TECHNICIAN

## SALARY

\$61,000\*  
MEDIAN ANNUAL INCOME

## JOB GROWTH

2022-2032: 6%\*



SCAN FOR YOUR FUTURE

# HEAVY EQUIPMENT TECHNOLOGY



## PROGRAM OBJECTIVE

Coursework prepares students to succeed as well-trained, mechanically minded, hard-working technicians with heavy equipment dealers and contractors. Instruction involves classroom theory, live shop demonstrations, and repair of heavy equipment currently used in industry. Making repairs on actual equipment is vital to skill development.

## READY. SET. WORK.

**Goal 1:** Graduates will possess the skills necessary to correctly troubleshoot and safely repair equipment used in the heavy equipment industry.

**Goal 2:** Graduates will understand the importance of professional behavior within the Heavy Equipment Industry

**Goal 3:** Graduates will possess the skills necessary to obtain an entry-level heavy equipment technician position.

Applicants are encouraged to arrange a campus visit and a personal information session with a Recruitment Advisor. Appointments may also be made to meet with appropriate faculty and current students.

## CAREER OPPORTUNITIES

Heavy equipment dealers and earth-moving contractors are the top employers for this field. Opportunities for graduates also exist in the mining and logging industries.

## PROGRAM COURSES

CREDITS

### SEMESTER 1

Transportation Safety & Certifications	2
Introduction to Diesel & Heavy Equipment Technology	2
Heavy Duty Brake Systems	1
Fundamentals of Powertrain Technology	2
Powertrain and Brake Systems Lab	2
College Algebra I & Trigonometry	3
Welding and Flame Cutting for Vehicles	1
Welding and Flame Cutting for Vehicles Lab	2
First-year Experience	1

### SEMESTER 2

Hydraulics I	4
Diesel Fuel Injection & Emissions	2
Diesel Fuel Injection & Emissions Lab	1
Physical Science	3
Electrical and Electronic Systems	1
Heavy Equipment Electrical and Electronic Systems	1
Industry Communication	3

### SEMESTER 3

Diesel Engine Overhaul	2
Diesel Engine Overhaul Lab	2
Introduction to John Deere Machines	1
John Deere Vehicle Machine Electronics & Diagnostic Procedures	3
John Deere Vehicles Lab	2
Hydraulics II	2
Introduction to Business	3
Art Elective	3

### SEMESTER 4

HVAC Vehicle Systems	2
HVAC for Heavy Equipment Vehicle Systems Lab	1
Customer Service and Our World	3
Applied Heavy Equipment Principles and Applications	1
Applied Heavy Equipment Principles and Application Lab or Internship	4
Hydraulics III	2
John Deere Electronic Engine Maintenance Systems	2

**MINIMUM CREDITS TO GRADUATE 63**

This semester layout is based off of a fall start. Students who start in the spring will be required to attend an additional semester to complete their degree.

There may be special admission requirements for this program. Please speak with a Recruitment Advisor by calling 570-702-8856 or visit our website [johnson.edu](http://johnson.edu) to review our requirements.