

RADIOLOGIC TECHNOLOGY

CAREER PATHS

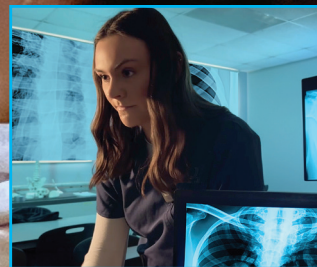
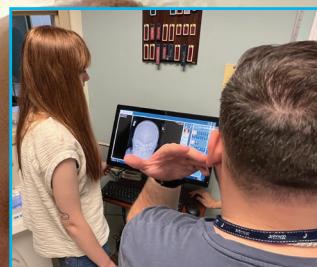
RADIOLOGIC TECHNOLOGIST

SALARY

\$78,980*
MEDIAN ANNUAL INCOME

JOB GROWTH

2023-2033: 6%*



SCAN FOR YOUR FUTURE



*2025 Bureau of Labor Statistics
Johnson College does not discriminate with regard to race, color, national origin, sex, or disability.



RADIOLOGIC TECHNOLOGY



PROGRAM OBJECTIVE

The Radiologic Technology program prepares students for entry-level positions in a hospital or outpatient clinical setting. Graduates will be prepared to take the national certification for the American Registry of Radiologic Technologists (ARRT) examination to become a registered technologist.

READY. SET. WORK.

Goal 1: Graduates will demonstrate clinical competency.

Goal 2: Graduates will utilize critical thinking skills

Goal 3: Graduates will demonstrate effective communication skills.

Applicants are encouraged to arrange a campus visit and a personal information session with a Recruitment Advisor. Appointments may also be made to meet with appropriate faculty and current students.

CAREER OPPORTUNITIES

Graduates can work as technologists in hospitals, medical service centers, and outpatient imaging centers, or with additional training and education, career advancement into other imaging modalities is possible.

The Radiologic Technology program at Johnson College offers several career and employment post-graduation paths. Upon successfully passing the ARRT national certification examination, students may continue their education in a nine-month certificate program in MRI or CT scanning.

SPECIAL ADMISSIONS REQUIREMENTS

Special admission requirements are necessary for acceptance into this program. Please see the program website for additional information.

<https://johnson.edu/divisions-of-study/health-and-animal-sciences/radiologic-technology/>

PROGRAM COURSES

CREDITS

TERM 1

Radiologic Positioning I	3
Radiologic Positioning I Lab	1
Radiologic Exposures & Principles I	4
Patient Care I	2
Human Anatomy & Physiology I	3
Human Anatomy & Physiology I Lab	1
College Algebra I and Trigonometry	3
Medical Terminology	1
First-Year Experience	1

TERM 2

Radiologic Positioning II	2
Radiologic Positioning II Lab	1
Radiologic Exposures & Principles II	3
Patient Care II	2
Clinical Practicum I	2
Human Anatomy & Physiology II	3
Human Anatomy & Physiology II Lab	1
English Composition I	3

TERM 3 (SUMMER)

Clinical Practicum II	4
-----------------------	---

TERM 4

Clinical Practicum III	2
Radiation Biology & Protection	3
Image Analysis	2
Communications Elective	3
Introductory Physics	3
Social Science Elective	3

TERM 5

Clinical Practicum IV	3
Radiologic Pathology	2
Advanced Medical Imaging	2
Professional Seminar	2
Introduction to Humanities	3
Art Elective	3

MINIMUM CREDITS TO GRADUATE

71

This term layout is based off of a fall start. Students who start in the spring will be required to attend an additional term to complete their degree.

There may be special admission requirements for this program. Please speak with a Recruitment Advisor by calling **570-702-8856** or visit our website johnson.edu to review our requirements.